

# THE POLO CLUB OPEN SPACE PLAT THREE

PART OF THE POLO CLUB P.U.D.

SITUATE IN SECTION 35, TOWNSHIP 46 SOUTH, RANGE 42 EAST

PALM BEACH COUNTY, FLORIDA.

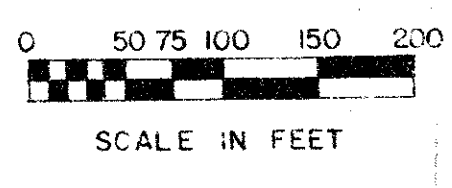
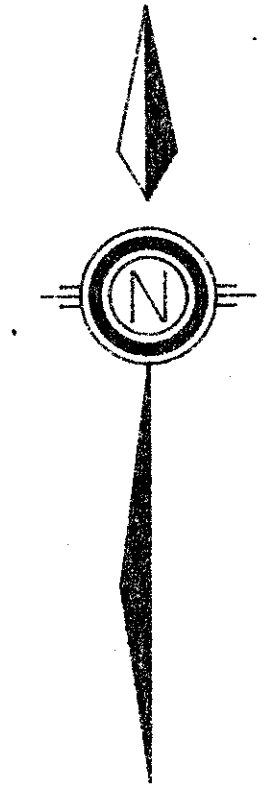
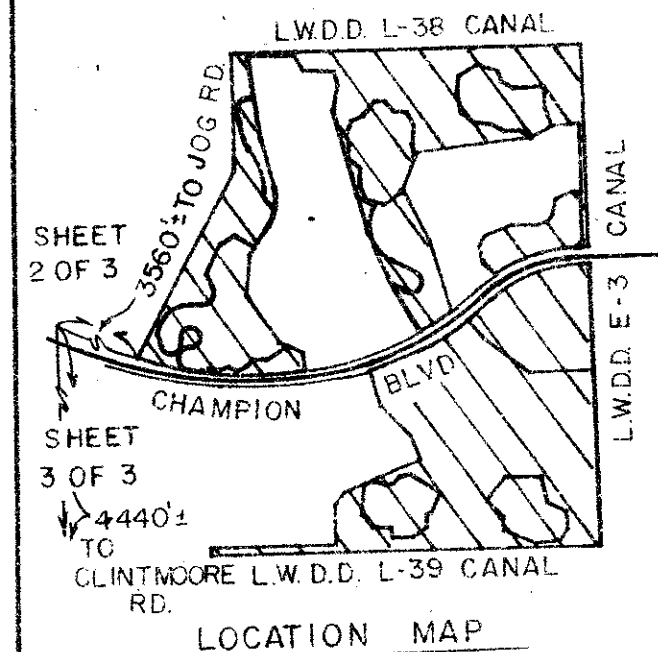
BEING A REPLAT OF A PORTION OF TRACTS II & III OF "THE POLO CLUB PLAT II"

1987

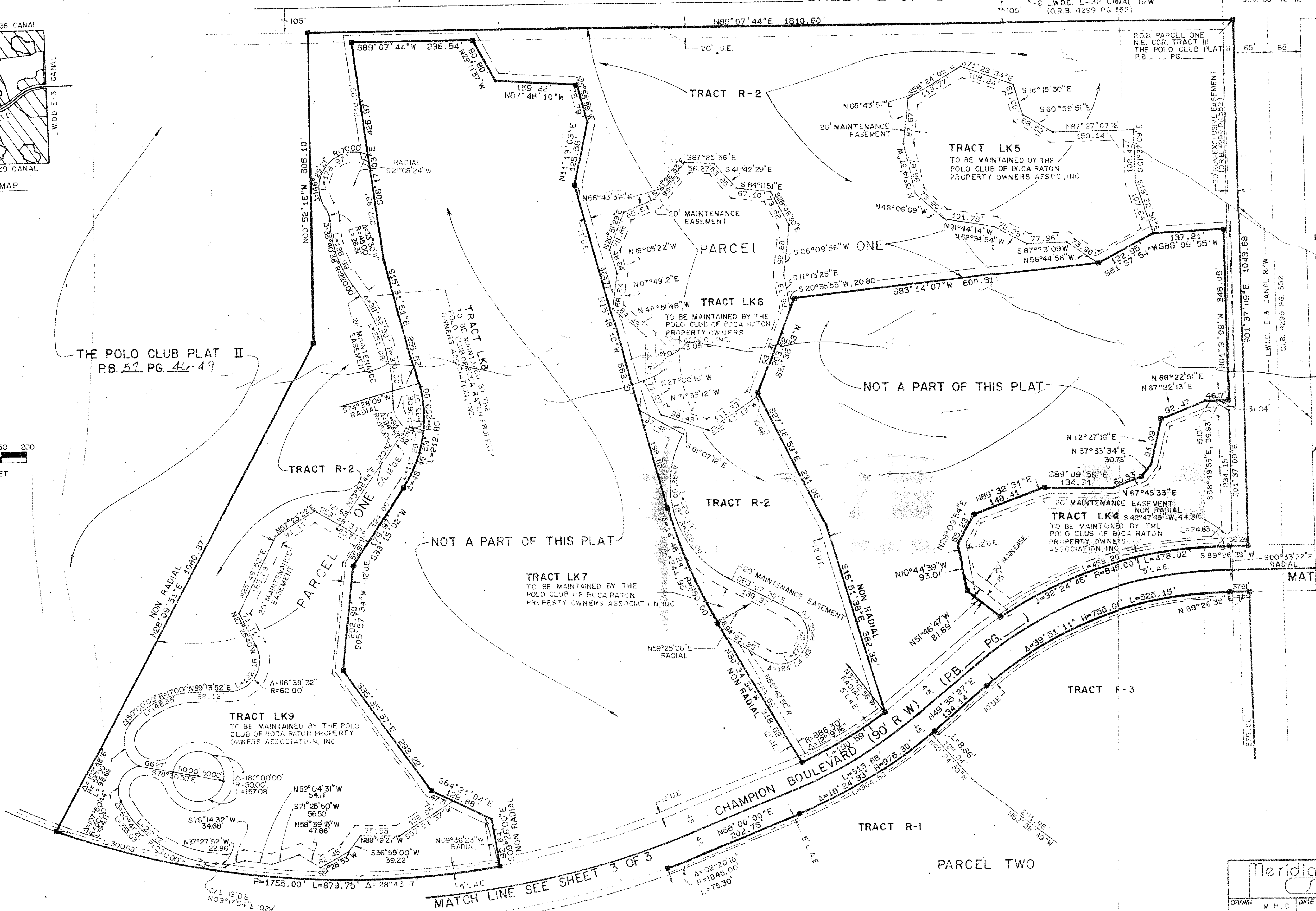
SHEET 2 OF 3

51

STATE OF FLORIDA  
 COUNTY OF PALM BEACH  
 THIS PLAT WAS FILED FOR  
 RECORD \_\_\_\_\_  
 THIS \_\_\_\_\_ DAY OF \_\_\_\_\_  
 AD, 1997 AND DULY RECORDED  
 IN PLAT BOOK \_\_\_\_\_ ON PAGES  
 \_\_\_\_\_ AND \_\_\_\_\_  
 JOHN B. DUNKLE, CLERK  
 BY: \_\_\_\_\_, D.C.



THE POLO CLUB PLAT II  
 P.B. 57, PG. 40-49



THE POLO CLUB PLAT I  
 (P.B. 57, PGS. 35-36)

MATCH LINE SEE SHEET 3 OF 3

open space  
 51  
 2208  
 3/13/81  
 Polo Club-PUD

Ret. 84-71  
 0436-301  
 57/51

Meridian		2000 LOMBARD STREET WEST PALM BEACH, FL.	
DRAWN	M.H.C.	DATE	FEB. 1987
CHECKED	M.A.M.	SCALE	1" = 100'
DRAWING NO.	86-P-126	THE POLO CLUB OPEN SPACE PLAT THREE PART OF "THE POLO CLUB" P.U.D.	